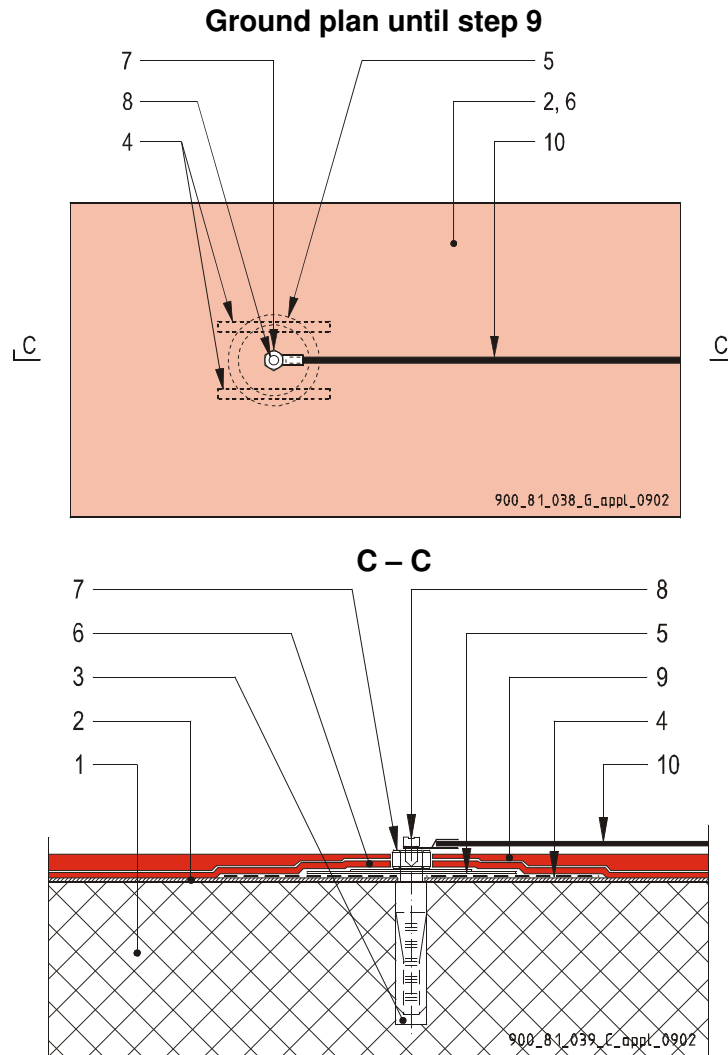


Sikafloor® - Conductive Coatings

Detailing of placing of an earthing point, Standard Solution (ECF / ESD floors)



- 1 Concrete construction
- 2 Sikafloor®-156/161, priming of the whole area
- 3 Drilling a hole for the heavy-duty anchor and inset-screw
- 4 Placing of the two copper-strips and inset anchor; anchor must be flush with the floor surface
- 5 Placing of the brass-plate and brass-disc
- 6 Sikafloor®-220 W Conductive, conductive layer
- 7 Fix the large and medium size brass-plates with the large brass screw
- 8 Fix the eyelet fastener using the small brass washer and screw to the large brass screw
- 9 Application of Sikafloor® conductive coating onto the whole area
- 10 Isolated wire (The connection of the Earthing point to the mains has to be executed by a licensed electrical engineer)

The information contained herein and any other advice are given in good faith based on Sika's current knowledge and experience of the products when properly stored, handled and applied under normal conditions in accordance with Sika's recommendations. The information only applies to the application(s) and product(s) expressly referred to herein. In case of changes in the parameters of the application, such as changes in substrates etc., or in case of a different application, consult Sika's Technical Service prior to using Sika products. The information contained herein does not relieve the user of the products from testing them for the intended application and purpose. All orders are accepted subject to our current terms of sale and delivery. Users must always refer to the most recent issue of the local Product Data Sheet for the product concerned, copies of which will be supplied on request.



Sika Services AG

Corporate Construction, Tüffenwies 16, CH-8048 Zürich, Switzerland
Phone +41 (0)58 436 40 40, Fax +41 (0)58 436 46 86, www.sika.com