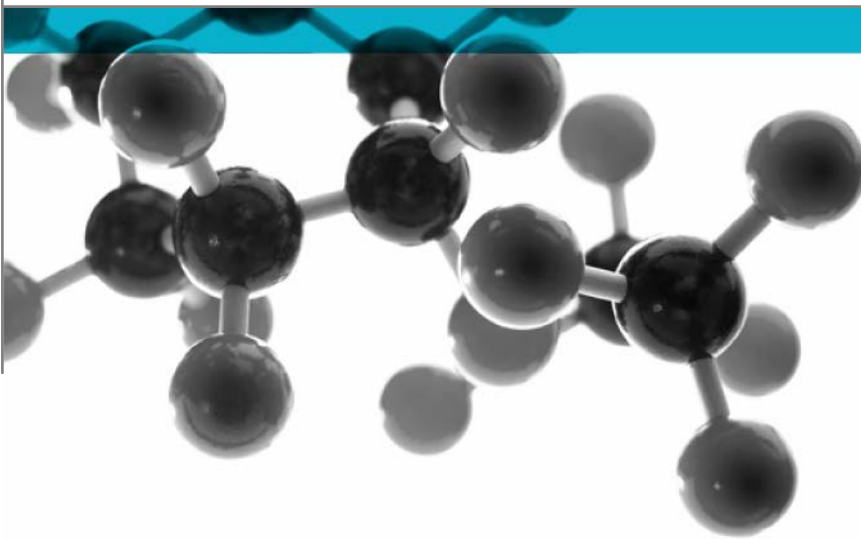


Exova Warringtonfire
Holmesfield Road
Warrington
WA1 2DS
United Kingdom

T : +44 (0) 1925 655116
F : +44 (0) 1925 655419
E : warrington@exova.com
W: www.exova.com



BS 476: Part 6: 1989+A1:2009



Method Of Test For Fire Propagation For Products

A Report To: Mapei UK Ltd

Document Reference: 383127

Date: 25th May 2017

Issue No.: 1

Page 1

Testing
Advising
Assuring



Executive Summary

Objective To determine the performance of the following product when tested in accordance with BS 476: Part 6: 1989+A1: 2009.

Generic Description	Product reference	Thickness / application rate	Weight per unit area or density
A coated render system applied to a calcium silicate substrate	"Silexcolor Paint"	14.64mm *	15.17kg/m ² *
Individual components used to manufacture composite:			
Top coat	"Silexcolor Paint"	2 x 0.2kg/m ²	1.46g/cm ³
Render	"Planitop 200"	3mm	1,300kg/m ³
Primer	"Silexcolor Primer"	0.15kg/m ²	1.1g/cm ³
Substrate	"Promat - Brandschutzbauplatten; Promatect-H"	12mm	870kg/m ³
*Determined by Exova Warringtonfire			
Please see pages 5 & 6 of this test report for the full description of the product tested			


Test Sponsor Mapei UK Ltd, Mapei House, Steel Park Road, Halesowen, West Midlands, B62 8HD


Test Results:

Fire propagation index, I	=	0.3
Sub index, i₁	=	0.1
Sub index, i₂	=	0.1
Sub index, i₃	=	0.1

Date of Test 5th May 2017

Signatories


Responsible Officer C. Meachin * Technical Officer


Authorised B. Dean * Technical Leader

* For and on behalf of **Exova Warringtonfire**.

Report Issued: 25th May 2017

This version of the report has been produced from a .pdf format electronic file that has been provided by **Exova Warringtonfire** to the sponsor of the report and must only be reproduced in full. Extracts or abridgements of reports must not be published without permission of **Exova Warringtonfire**.

CONTENTS	PAGE NO.
EXECUTIVE SUMMARY	2
SIGNATORIES.....	2
TEST DETAILS.....	4
DESCRIPTION OF TEST SPECIMENS.....	5
TEST RESULTS	7
TABLE 1.....	8
TABLE 2.....	9
TABLE 3.....	9
REVISION HISTORY	11

Test Details

Purpose of test	To determine the performance of a product when it is subjected to the conditions of the test specified in BS 476: Part 6: 1989+A1: 2009, "Fire tests on building materials and structures, method for fire propagation for products".
Scope of test	The test was performed in accordance with the procedure specified in BS 476: Part 6: 1989+A1: 2009, and this report should be read in conjunction with that British Standard.
Fire test study group/EGOLF	BS 476: Part 6: 1989+A1: 2009 specifies a method of test, the result being expressed as a fire propagation index, that provides a comparative measure of the contribution to the growth of fire made by an essentially flat material, composite or assembly. It is primarily intended for the assessment of the performance of internal wall and ceiling linings.
Instruction to test	Certain aspects of some fire test specifications are open to different interpretations. The Fire Test Study Group and EGOLF have identified a number of such areas and have agreed Resolutions which define common agreement of interpretations between fire test laboratories which are members of the Groups. Where such Resolutions are applicable to this test they have been followed.
Provision of test specimens	The test was conducted on the 5 th May 2017 at the request of Mapei UK Ltd, the sponsor of the test.
Conditioning of specimens	The specimens were supplied by the sponsor of the test. Exova Warringtonfire was not involved in any selection or sampling procedure. Exova Warringtonfire supplied the substrate.
Form in which the specimens were tested	The specimens were received on the 28 th April 2017 and were conditioned to constant mass at a temperature of $23 \pm 2^{\circ}\text{C}$ and a relative humidity of $50 \pm 5\%$ prior to testing.
Exposed face	Composite - Combination of materials which are generally recognised in building constructions as discrete entities e.g. coated or laminated materials.
Exposed face	The coated face of the specimens was exposed to the heating conditions of the test.

Description of Test Specimens

The description of the specimens given below has been prepared from information provided by the sponsor of the test. All values quoted are nominal, unless tolerances are given.

General description		A coated render system applied to a calcium silicate substrate
Product reference		"Silexcolor Paint"
Thickness		14.64mm (determined by Exova Warringtonfire)
Weight per unit area		15.17kg/m ² (determined by Exova Warringtonfire)
Top coat (test face)	Generic type	Silicate
	Product reference	"Silexcolor Paint"
	Name of manufacturer	Mapei
	Colour reference	"Base P" (stated by sponsor) "White" (observed by Exova Warringtonfire)
	Number of coats	Two
	Application rate per coat	0.2kg/m ²
	Density	1.46g/cm ³
	Application method	Brush
	Flame retardant details	See Note 1 below
	Curing process per coat	12 hours
Render	Generic type	Cementitious
	Product reference	"Planitop 200"
	Detailed description / composition details	One-component, fine-grained, water-repellent cementitious skimming mortar
	Name of manufacturer	Mapei S.p.A
	Colour reference	"Grey"
	Number of coats	One
	Application thickness per coat	3mm
	Density	1,300kg/m ³
	Application method	Trowel
	Flame retardant details	See Note 1 below
Curing process per coat	2 – 8 hours	
Primer	Generic type	Silicate
	Product reference	"Silexcolor Primer"
	Name of manufacturer	Mapei
	Colour reference	"Clear"
	Number of coats	One
	Application rate per coat	0.15kg/m ²
	Density	1.1 g/cm ³
	Application method	Brush
	Flame retardant details	See Note 1 below
Curing process per coat	24 hours	

Continued on next page

Calcium silicate	Product reference	"Promat - Brandschutzbauplatten; Promatect-H"
	Generic type	Calcium Silicate based board
	Manufacturer	Promat
	Thickness	12mm
	Density	870 kg/m ³
	Flame retardant details	The substrate is inherently flame retardant
Brief description of manufacturing process		See Note 2 below

Note 1: The sponsor of the test has confirmed that no flame retardant additives were utilised in the production of the component.

Note 2: The sponsor was unable to provide this information.

Test Results

Results

A total of three specimens were tested. The laboratory record sheet relating to each of the test specimens is appended to this report (refer to Tables 1, 2 and 3).

Throughout the test on each specimen careful observation was made of the product's behaviour within the apparatus and special note was taken of any of the phenomena listed in clause 9.2 of the Standard. None of the listed phenomena was observed and the test results on all three specimens tested were valid.

The following test results were obtained for the product.

Fire propagation index, I	=	0.3
Sub index, i_1	=	0.1
Sub index, i_2	=	0.1
Sub index, i_3	=	0.1

NOTE: If a suffix 'R' is included in the above fire propagation index, I, then this indicates that the results should be treated with caution.

Applicability of test result

The test results relate only to the behaviour of the test specimens of the product under the particular conditions of test; they are not intended to be the sole criterion for assessing the potential fire hazard of the product in use.

The test results relate only to the specimens of the product in the form in which they were tested. Small differences in the composition or thickness of the product may significantly affect the performance during the test and may therefore invalidate the test results. Care should be taken to ensure that any product which is supplied or used is fully represented by the specimens which were tested.

Validity

The specification and interpretation of fire test methods are the subject of ongoing development and refinement. Changes in associated legislation may also occur. For these reasons it is recommended that the relevance of test reports over five years old should be considered by the user. The laboratory that issued the report will be able to offer, on behalf of the legal owner, a review of the procedures adopted for a particular test to ensure that they are consistent with current practices, and if required may endorse the test report.

This report may only be reproduced in full. Extracts or abridgements shall not be published without permission of **Exova Warringtonfire**.

Table 1
Laboratory Record Sheet
FIRE PROPAGATION TEST - BS476:PART 6:1989+A1:2009
Specimen No. : 1
Date : 5-May-17

Time mins t	Specimen Temperature Deg C Ts	Calibration Temperature Deg C Tc	Ts- Tc/10t	Sub Index Of Performance
0.50	10	9	0.20	0.42
1.00	14	14	0.00	
1.50	19	18	0.07	
2.00	23	22	0.05	
2.50	27	26	0.04	
3.00	31	29	0.07	
4.00	59	60	0.00	0.07
5.00	92	97	0.00	
6.00	123	123	0.00	
7.00	145	146	0.00	
8.00	164	162	0.03	
9.00	176	174	0.02	
10.00	187	185	0.02	
12.00	204	200	0.03	
14.00	216	211	0.04	
16.00	222	219	0.02	
18.00	230	224	0.03	
20.00	236	230	0.03	
Total Index of Performance S			=	0.64

SubIndex s1 0.42
SubIndex s2 0.07
SubIndex s3 0.15
Index of Performance S 0.64

Table 2
Laboratory Record Sheet
FIRE PROPAGATION TEST - BS476:PART 6:1989+A1:2009
Specimen No. : 2
Date : 5-May-17

Time mins t	Specimen Temperature Deg C Ts	Calibration Temperature Deg C Tc	Ts- Tc/10t	Sub Index Of Performance
0.50	10	12	0.00	
1.00	15	17	0.00	
1.50	21	22	0.00	
2.00	25	26	0.00	
2.50	30	30	0.00	
3.00	34	35	0.00	0.00
4.00	62	65	0.00	
5.00	101	103	0.00	
6.00	130	133	0.00	
7.00	155	156	0.00	
8.00	174	172	0.03	
9.00	188	186	0.02	
10.00	199	195	0.04	0.09
12.00	217	213	0.03	
14.00	227	222	0.04	
16.00	238	231	0.04	
18.00	245	236	0.05	
20.00	248	240	0.04	0.20
Total Index of Performance S			=	0.29

SubIndex s1 0.00
SubIndex s2 0.09
SubIndex s3 0.20
Index of Performance S 0.29

Table 3
Laboratory Record Sheet
FIRE PROPAGATION TEST - BS476:PART 6:1989+A1:2009
Specimen No. : 3
Date : 5-May-17

Time mins t	Specimen Temperature Deg C Ts	Calibration Temperature Deg C Tc	Ts- Tc/10t	Sub Index Of Performance
0.50	10	11	0.00	
1.00	15	17	0.00	
1.50	20	21	0.00	
2.00	24	25	0.00	
2.50	28	29	0.00	
3.00	31	32	0.00	0.00
4.00	61	65	0.00	
5.00	100	101	0.00	
6.00	130	129	0.02	
7.00	155	152	0.04	
8.00	172	168	0.05	
9.00	185	182	0.03	
10.00	195	194	0.01	0.15
12.00	212	209	0.03	
14.00	221	220	0.01	
16.00	228	227	0.01	
18.00	235	235	0.00	
20.00	241	238	0.02	0.05
Total Index of Performance S			=	0.21

SubIndex s1 0.00
SubIndex s2 0.15
SubIndex s3 0.05
Index of Performance S 0.21

Revision History

Issue No :	Re-issue Date:
Revised By:	Approved By:
Reason for Revision:	

Issue No :	Re-issue Date:
Revised By:	Approved By:
Reason for Revision:	