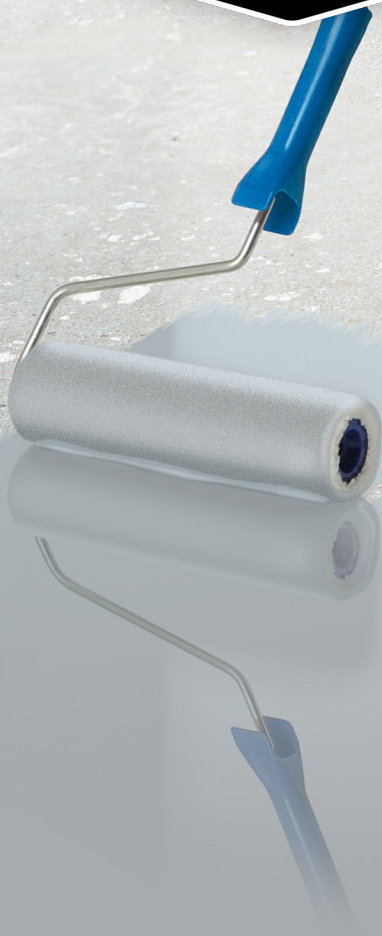


RUST-OLEUM®
— INDUSTRIAL —



EPOXYSHIELD® MAXX + ADDITIVES

Water based industrial floor coating

- Water based
- For medium to heavy traffic
- Easy to apply, no primer required
- Long-lasting gloss finish (Non-skid or decorative finish optional)
- Highly resistant against solvents, chemicals and car tyres

KNOW-HOW TO PROTECT™

WWW.RUST-OLEUM.EU

EPOXYSHIELD® MAXX + ADDITIVES

DESCRIPTION

Epoxyshield® is a user friendly and easy to apply water-based epoxy garage floor coating with an ultimate adhesion and durability. The product has an excellent wear, impact and abrasion resistance like heavy foot and vehicle traffic. Resists chemicals.

RECOMMENDED USE

Epoxyshield® 5300 MAXX can be applied on concrete floors, which are completely clean and dry. It is not recommended to apply on smooth/dense concrete or concrete containing a curing compound, which will prevent a good adhesion. Epoxyshield® 5300 MAXX can also be applied on old good adhering coatings. Epoxyshield® 5300 MAXX Additives:

- Epoxyshield® Antislip Additive (200.0.7) gives an excellent anti slip finish when mixed with Epoxyshield® 5300 MAXX.
- Epoxyshield® Decorative Chips (505.0.43) are specially designed for use in combination with Epoxyshield® 5300 MAXX. The chips adhere permanently on the floor when they are sprinkled in the wet coating. They give a decorative finish and will also mask dirt and rugosity.

TECHNICAL DATA

| | |
|---------------------------|-----------------------------------|
| Density (g/cm³): | 1,27 |
| Gloss Level: | Satin |
| Solids content in volume: | 63.6% |
| Mixing Ratio: | Base : Activator = 3 : 1 (volume) |

DRY TIMES BY 20° C/RV 50%

| | |
|-----------------|--|
| Dry to handle: | 16 hours (suitable for light foot traffic) |
| Dry to recoat: | 24 hours (suitable for normal foot traffic and heavy items) |
| Fully cured: | 7 days (suitable for vehicle traffic) |
| Pot Life: | 2 hours (15°C), 1½ hours (21°C), 1 hour (26°C) |
| Induction Time: | Brushing: 30 minutes (15°C), 10 minutes (20°C), Direct (25°C). Rolling: 45 minutes (15°C), 15 minutes (20°C), 5 - 15 minutes (25°C) |

THEORETICAL CONSUMPTION

Approx. 7 m²/l depending on the substrate and application method. On some occasions 1 coat may be sufficient.

SURFACE PREPARATION

Repair any holes or cracks with EpoxyShield concrete repair products. If the floor is previously painted, remove any loose paint by sanding and scraping. Remove oil and grease using a scrub brush and EpoxyShield cleaner/degreaser. Rinse thoroughly with fresh water afterwards. Remove all water and allow to dry completely. Wipe your fingers over the clean, dry floor. If you see any dust or powder, repeat the rinsing until the floor is clean. Wipe your fingers over the clean, dry floor. If you see any dust or powder on your fingers, repeat the rinsing and scrubbing until the floor is clean.

DIRECTIONS FOR USE

Pour the contents of A into B and stir thoroughly for at least 3 minutes. Allow mixed product to stand (see table) before rolling the coating on to the surface. Do not leave container in direct sunlight. Mix again before applying. The product must be used within 1 to 2 hours of initial mixing (pot life, see table). This time decreases at higher temperatures. Do not mix Paint Chips with Epoxyshield® 5300 MAXX.

APPLICATION CONDITIONS

Apply when air (ambient) temperature is 15-35°C and relative humidity is below 80%. Concrete floors take a long time to warm up; make sure the previous day has also been at least 15°C prior to painting. Minimum floor temperature for painting is 13°C. Painting in mid afternoon ensures the best cure.

APPLICATION & THINNING: ROLLER

After the full 60 minutes use a paint roller (20 cm) to apply an even coat of Epoxyshield® 5300 MAXX onto the surface. Apply in sections of 1,5 x 1,5 m so that Epoxyshield® Decorative Chips can easily be scattered on the freshly coated surface. Maintain a wet edge to prevent lap marks and gloss differences. Sprinkle the decorative paint chips onto the wet film (note: this step may be skipped if chips are not desired. This will not affect the performance of the coating). Immediately continue to coat the next section (note: fresh paint can be applied over the loose chips that lay outside the previously painted area).

CLEANING OF EQUIPMENT / SPILLS

Wash all tools and equipment immediately with warm water and mild detergent. Allow any unused product to harden in the container and discard according to local regulations.

REMARKS

Since the application time is only 1 - 2 hours (depending on temperature) it is advisable to apply the product with 2 persons. Have 1 person begin trimming edges and have another person begin rolling out the floor as specified. To ensure best performance, DO NOT PAINT IF THE FOLLOWING CONDITIONS EXIST:

1. Sealed concrete: dripping a small amount of water onto the surface. If the water beads, a sealer is present and paint may not adhere properly.
2. Moisture in the concrete: apply a sheet of plastic (e.g. garbage bag) to the floor. Tape down the edges and allow to set for 24 hours. If water droplets appear on the inside of the plastic or if concrete appears wet (darker in color), moisture is trapped in the concrete.
3. Loose concrete or concrete dust: if the concrete is loose, chipping or has concrete dust present, the coating will not perform properly unless all loose material and dust is removed and damaged areas are repaired.
4. Floors treated with a levelling mortar or on anhydride floors.
5. Stagnating water.

SAFETY DATA

| | |
|---------------------------|---|
| VOC level: | 53 g/l |
| VOC ready mix: | 53 g/l |
| VOC category: | A/j |
| VOC limit: | 140 g/l |
| Remarks regarding safety: | Avoid contact with skin and eyes. For skin contact, wash affected area with soap and water and rinse well. First aid: in case of contact with eyes, flush with cold water for 15 minutes. If swallowed, do not induce vomiting. Drink 1-2 glasses of water or milk. Contact a physician immediately. Keep out of reach of children. Do not take internally. Consult for further information the Safety Data Sheet and the Safety Information printed on the can. |

SHELF LIFE

Minimum of 5 years from date of production in unopened cans, if stored in dry, well ventilated areas, not in direct sunlight at temperatures between 5° and 35° C.

Date issued: 24/06/2022

Available colours & pack sizes: Please refer to the respective product page on www.rust-oleum.eu for an overview of actual available colours and pack sizes.

Disclaimer: The information contained herein is to the best of our knowledge true and accurate and is given in good faith but without warranty. The user will be deemed to have satisfied him/herself independently as to the suitability of our products for his/her own particular purpose. In no event shall Rust-Oleum Europe be liable for consequential or incidental damages. Products must be stored, handled, and applied under conditions complying with Rust-Oleum Europe recommendations detailed within the latest copy of the product data sheet. It is the users responsibility to ensure that they have the current copy. Latest copies of the product data sheet is available for free and downloadable from www.rust-oleum.eu or upon a request to our Customer Services department. Rust-Oleum Europe reserves the right to change the properties of its' products without prior notification.

Rust-Oleum Netherlands B.V.
Zilverenberg 16
5234 GM 's-Hertogenbosch
The Netherlands
T : +31 (0) 165 593 636
F : +31 (0) 165 593 600
info@rust-oleum.eu

Tor Coatings Ltd (Rust-Oleum Industrial)
Shadon Way, Portobello Ind. Estate
Birtley, Chester-le-Street
DH3 2RE United Kingdom
T : +44 (0)1914 113 146
F : +44 (0)1914 113 147
info@rust-oleum.eu

Rust-Oleum France S.A.S.
38, av. du Gros Chêne
95322 Herblay
France
T : +33(0) 130 40 00 44
F : +33(0) 130 40 99 80
info@rust-oleum.eu

N.V. Martin Mathys S.A.
Kolenbergstraat 23
3545 Zelem
Belgium
T : +32 (0) 13 460 200
F : +32 (0) 13 460 201
info@rust-oleum.eu