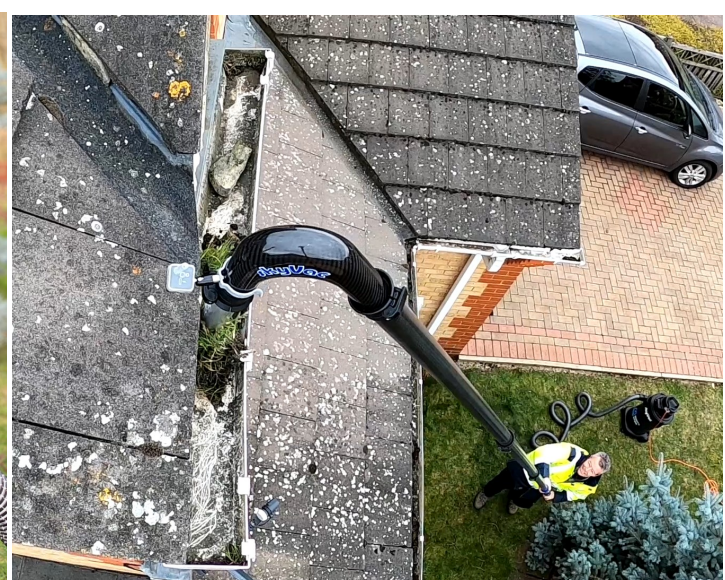


skyVac **MIGHTY ATOM**

USER GUIDE: **PUSH FIT / CLAMPED POLES**



skyVac **MIGHTY ATOM**

CONGRATULATIONS ON YOUR PURCHASE

This manual gives an overview of how to use and maintain your system.

44mm PUSH FIT POLE



50mm CLAMPED POLE



Pole number will vary, depending on height package purchased.

Package Content will vary depending on Pole type purchased (Push Fit / Clamped)

*Entry port will depend on package purchased (Front / Cyclonic)

CONTENTS

Features and specification. P.3

Suck & Blow Function. P4

Hose / Floor Tool kit. P5

Push fit / Clamped Pole assembly. P4-8

Vac Release Pole / Pole Maintenance. P9

Emptying / Filter / Float Valve. P10

Best Practice / Trouble shooting. P11.

skyVac® Elite Vac Release Pole. Patent PENDING: Application No: GB1713830.6

skyVac® Elite Hairpin Tool Holder: European Community Design Registration Number 008458913

skyVac **MIGHTY ATOM**

COMPONENTS

MIGHTY ATOM | KEY SYSTEM FEATURES



Machine Specification | EXTERNAL & INTERNAL

Motor Wattage:	1600 W
Air Flow Movement:	3800 LPM
Container Capacity:	35 litres
Water Lift:	110"
Weight:	8 kg
Decibel Level:	60 dB
Mains Connection:	240 volts
Power Cable Length:	8 metres
Dimensions (cm):	37(l) x 40(w) x 79(h)



skyVac **MIGHTY ATOM**

SUCK / BLOW FUNCTION



BLOW PORT:

Push Red button to the left to release cuff.



SUCTION PORT:

Push Red button down to release cuff.



50mm SUCTION / BLOW PORT



SUCTION:

1. Insert / push the Hard Cuff on the end of the 50mm Wire Reinforced Hose, into the cyclonic suction port. "Click" lock in place.
2. To turn on the suction function, press the "ON" button.
3. To remove the Hard Cuff from the port, press down on the red button on the side of the cyclonic port to unlock. Once unlocked, pull the hard cuff out of the Vac port. in place

BLOW:

1. Insert / push the Hard Cuff on the wire reinforced hose, into the blow port and "Click" lock in place.
2. To turn on the blow function, press the "ON" button.
3. To remove the Hard Cuff from the blow port, gently slide the red button over to the left (away from the vac pot). Once unlocked, pull the hard cuff out of the blow port.

skyVac **MIGHTY ATOM**

WIRE REINFORCED HOSE

5M 50mm Wire Reinforced Hose



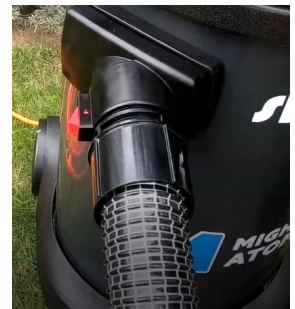
SOFT CUFF:

Attach to base of suction pole
(Push Fit)



HARD CUFF :

to insert into either
Blow / Suction port.
(Push & Lock).



FLOOR TOOL KIT



FLOOR TOOL KIT: 3 x Handle Attachments.



HARD FLOOR HEAD



WATER PICK UP HEAD



CARPET HEAD

2M 38mm HOSE

For use with floor tool kit only.

1. *Insert Large Hard Cuff into Vac Port*
2. *Insert Floor Tool Kit Handle into smaller hose port*



skyVac **MIGHTY ATOM**

44mm PUSH FIT POLE COMPONENTS



- Small round Brush for high level dusting.
- Crevice tool connector
- 3 gutter cleaning tools: Standard Dirt Breaker / Daily End Tool / Crevice End
- 2 x Silicone Flexi Tool Holders: 135 & 180 degree

PUSH FIT POLE ASSEMBLY

ORANGE TIP: (TOP POLE: Attach Tool Holder)

BASE



TOP (Coloured Tip)

BASE



1. The coloured band indicates the TOP of EACH POLE—with the Orange band indicating the highest pole for use with the tool holder.
2. Ease the base of the higher pole, INSIDE the neck of the TOP (coloured band) of the lower pole. (Male into Female).
3. The HIGHER pole should sit INSIDE the LOWER pole to ensure that the dirt and debris flows OVER the joint and not into it.
4. To achieve desired height, slot poles together, resting against the side of a building.

TOP TIP:

Have a bucket of water handy and flush your poles through at the end of each task to rinse out any dirt and debris that can get stuck in the joints

skyVac **MIGHTY ATOM**

50mm CLAMPED POLE COMPONENTS



ELITE END TOOLS & 135° HAIRPIN NECK

skyVac® Elite Hairpin Tool Holder: European Community Design Registration Number 008458913



- 6 x Tools: Aluminium Long end tool / Aluminium dirt breaker / Aluminium Crevice end tool / Elite long soft tool / Aluminium Tapered end tool / Aluminium Scalloped End Tool.
- skyVac® Elite Hairpin tool holder – for firmer control and less risk of blockages.
- 1 X skyVac® Elite Vac Release Pole.

CLAMPED POLE ASSEMBLY

TOP (Clamped)

BASE (ridged band)



1. Drop the ridged base into the top of the clamped neck section.
2. The ridge at the base of the pole ensures the correct locking position.
3. Once in position, secure in place with the locking lever.



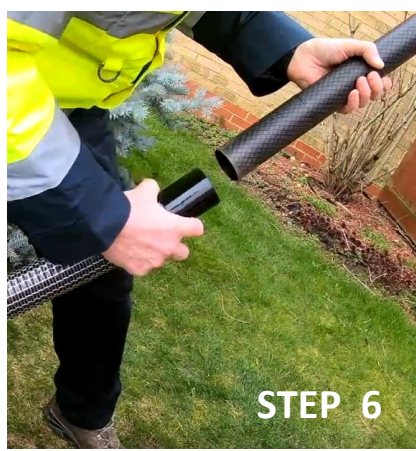
CLAMP TENSION: Turn screw clockwise to tighten, anti-clockwise to loosen

LOCKING LEVER: Push clamp forwards and down to lock, flip open, to release.

POLE ASSEMBLY

FOR PUSH FIT & CLAMPED POLES:

1. Insert end tool into neck of tool holder. (not shown).
2. Attach tool holder to head of the top / highest pole.
3. Build poles up to the required height – starting at the top pole (with the end tools) and working down. Add each new pole below the previous.
4. Rest the poles against a side of a building whilst building.
5. Ensure the Vac release pole is the base pole (clamped poles only).
6. Once the pole is assembled to the required height, attach the soft cuff end of the wire reinforced hose, onto to the base of the pole.
7. Switch on.



TOP TIP:

Assemble your poles up against the side of the building you are working on so you are ready to start!

skyVac **MIGHTY ATOM**

VAC RELEASE POLE USE

1. The skyVac® Vac Release pole should always be the base pole, closest to the operator.
2. Ensure the intended “drop” area below is clear .
3. Place the end tool over the gutter turf and when securely held , lift the turf up out of the gutter.
4. Rotate the Vac cuff chamber, clockwise, allowing air into the chamber and cutting suction. The Turf will drop.
5. Close the Vac chamber by twisting anti-clockwise to restart the suction.



POLE MAINTENANCE

skyVac® Pole Maintenance

3 top tips to prolong the life of your suction poles

1

Always have a bucket of water handy. Flush your tools, poles and Vac, out at the end of each project - and during, on tough projects.



2



At the end of the day, fill the bucket with clean water. Rinse off any excess dirt from each end of the pole.

3

Wipe around the neck of the top and base of each pole with a damp cloth to ensure they are free from dirt.



TOP TIP:

Spray a clean cloth with WD40. Give the top and base of each clean and dry pole, a good wipe both inside and outside of the join area.

skyVac **MIGHTY ATOM**

EMPTY / FILTER MAINTENANCE

EMPTYING:

1. To remove the Vac head, unclip the side clamps and using the top handle, lift the Vac head out of the drum. Place Vac head safely on the ground.
2. To remove the filter, lift the circular frame from the neck of the drum.
3. To empty drum contents, lift the base and tilt the contents into a flower bed, bucket.



FILTER MAINTENANCE

1. Sitting in between the Vac head and the drum, the filter prevents dust and debris from entering the motor.
2. For maximum suction, start each project with a clean and dry filter.
3. We recommend keeping the filter in at all times to protect the motor.
4. When emptying your vacuum throughout the day, ensure the filter is replaced with the vac port directed at the same spot.
5. Remove and clean your filter at the end of each project.
6. Start new projects with a CLEAN and DRY filter.

TO CLEAN:

1. Brush the sides of the filter with a stiff brush to remove excess dirt.
2. If the filter is exceptionally dirty, use a domestic hose with spray jet attachment to wash down.
3. Brush around the air intake section of the vacuum head.

NOTE:

1. The motor draws air into the engine, passing through the filter.
2. If the filter becomes 1) clogged with dirt or 2) wet through, then air flow to the motor becomes restricted.
3. A dirty / clogged filter will affect your engine performance and can result in a loss of suction.
4. The filter can be removed for extremely wet projects (where there is no risk of dry dust entering the motor) - but **MUST** be replaced at the start of each new project.
5. We recommend having a spare filter with your system, so you can alternate filter use.
6. Replace your filter every six months.

EMPTY / FILTER MAINTENANCE

TOP TIPS TO KEEP YOUR SKYVAC® MIGHTY ATOM WET & DRY VACUUM IN THE BEST CONDITION.

1. Start each new project with a CLEAN and DRY Filter.
2. Build your poles up to the required height resting against the side of a building—do not assemble on the ground and then try to lift up.
3. Have a clean bucket of water on standby! To help clear through blockages during gutter clearance projects.
4. At the end of each task, rinse the system through. Drop the poles into a bucket of clean water and let it run through the poles, hose and Vacuum.
5. Give poles and end tools a thorough clean to ensure they are clean and free from dirt paying attention to the joints.

SYMPTOM	POTENTIAL CAUSE	REMEDY
Loss of Suction	Blocked filter, or full bin	Clean filter and empty bin
Loss of Suction	Blockages in flexi neck, or poles, or vac entrance	Clear blockages
Loss of Suction	Leaves blocking at end tool	Tap leaves & end tool on roof tiles
Loss of Suction	Blocked flexi neck	Place end tool on the roof and gently pull down, to slightly straighten flexi bend, in order to unblock
Loss of Suction	Damp debris build up, inside flexi hose or tubes	Suck water from the bucket.
Machine stopped working	Loss of power	Check power supply
Machine stopped working	Too many, or incorrect extension leads	Always use heavy duty extension leads

skyVac **MIGHTY ATOM**

