

Design floors



ALL EYES ON THE FLOOR!

A unique design floor is part of a room's identity. Coloring, patterning, personalizing – everything is possible. Special effects highlight the floor in a completely new way in public spaces such as restaurants, coffee shops, shopping centers, and business premises. A design floor creates a new atmosphere in classrooms or company lounges and meeting rooms, too.

Tikkurila floor products offer an almost unlimited range of colors and a variety of possible patterns. At http://www.tikkurila.com/industrial_coatings/solutions/design_floors, you can find working instructions, including instruction videos, as well as guidance in floor surface planning, and inspiring images of all the techniques described in this brochure. Other than this, you only need your imagination.

A floor is designed to endure tough wear, but it does not need to look dull.

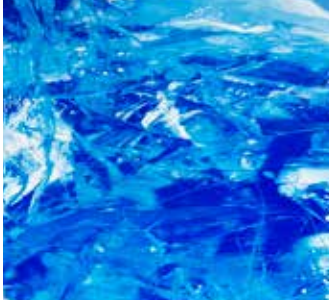


2-3 INTRODUCTION AND CONTENTS

4-5 FREE-HAND PATTERNING



6-7 SPATTER PATTERNING



8-9 INSPIRATION COLLAGE

10-11 MARBLING



12-13 STAINED CONCRETE FLOOR

14 USE OF COLOURS

16 CONTACT DETAILS



FREE-HAND PATTERNING

The final product of free-hand patterning shows the handiwork of both the designer and the painter. The most impressive results can be achieved by using large, simple patterns, for which the form and size relative to the floor surface area have been planned well in advance.

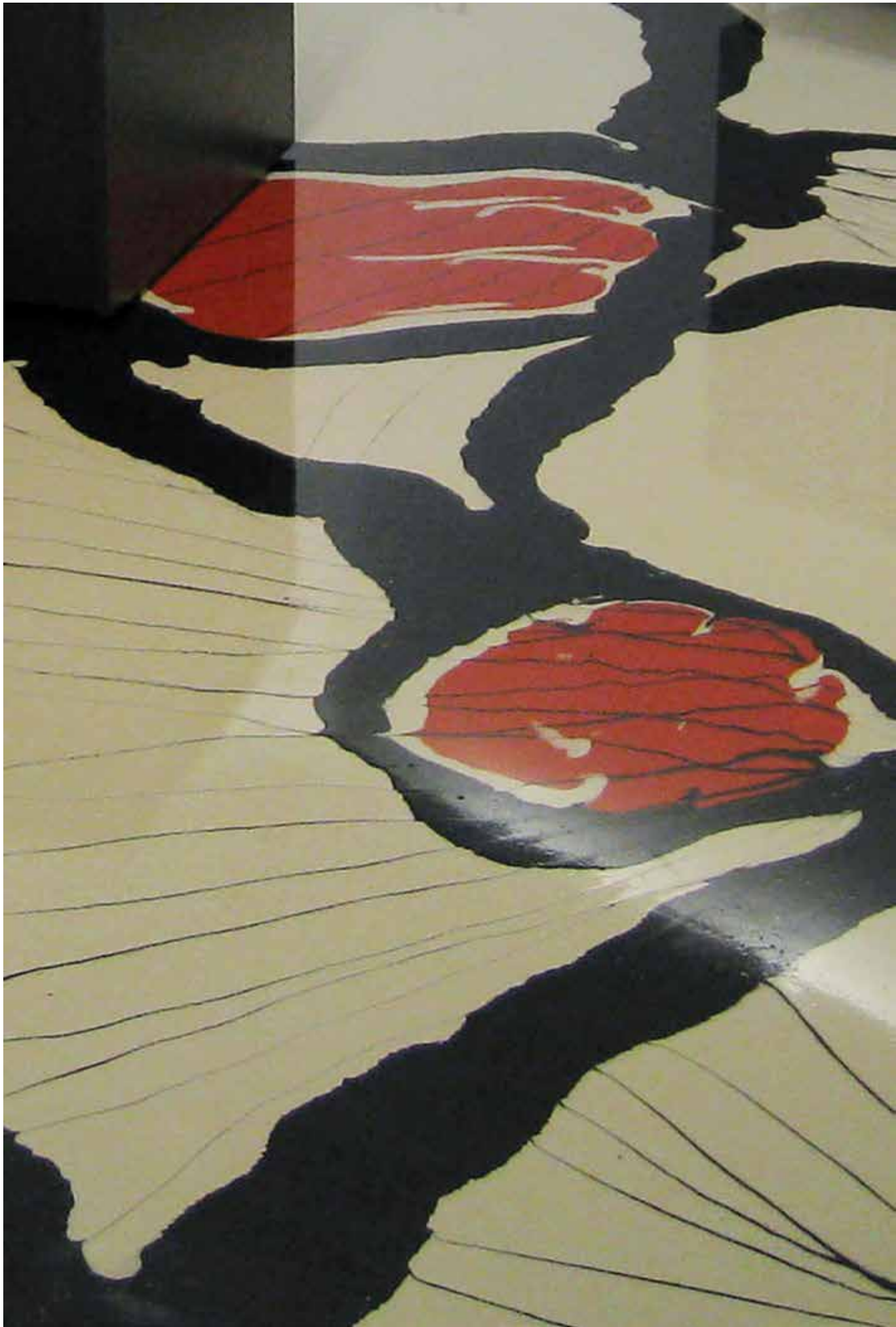
With free-hand patterning, you can, for example, divide large, open spaces into different sections, draw attention to specific parts of a space, or mark routes in a shopping center or a hospital.

By selecting different color shades, magnificent contrasts or, alternatively, subtler combinations can be created. The thickness of a line can be varied by using different kinds of pouring jugs. The work is meticulous, but it is certainly rewarding for the painter.

Suitable products:

Pretreatment: Temafloor 200 Primer or Temafloor 220 W Primer

Pattern: Temafloor P 300 or P 300 Metallic epoxy coating





SPATTER PATTERNING

An impressive, stone-like surface pattern can be created on the floor by using paint thinner. The thinner is sprayed from a spray bottle or a garden hose; then by adjusting the droplet size, you can change the size of the pattern that is formed on the surface. Even across a wide surface area, a spatter-patterned floor is a beautiful, subtle whole, which can embellish a large, public space as well as a small café.

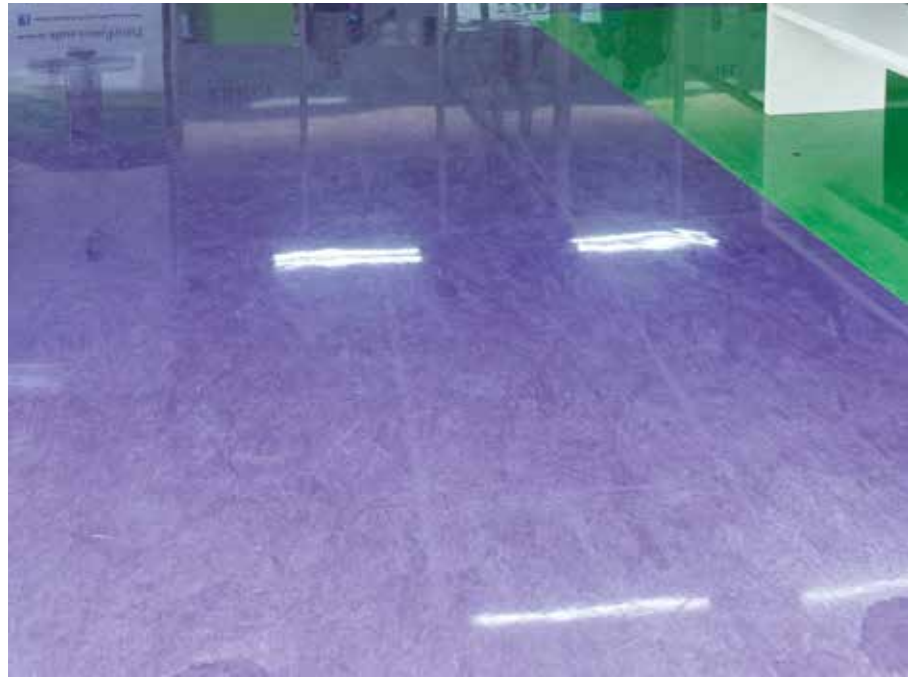
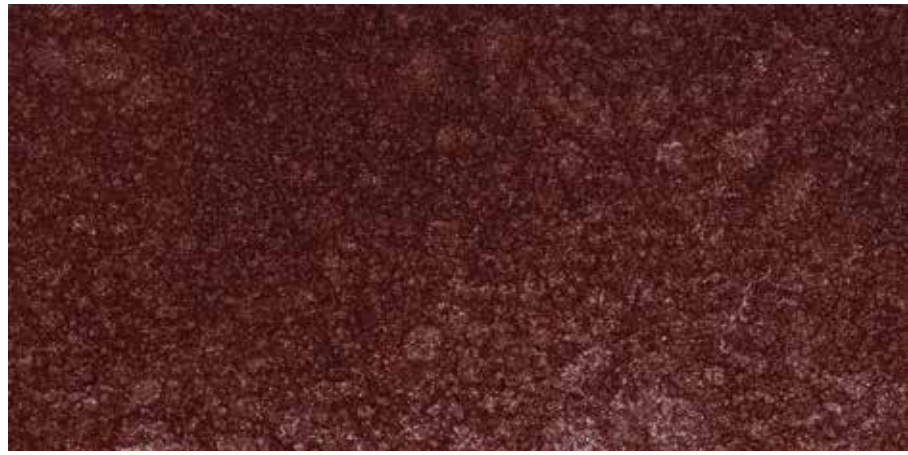
Suitable products:

Pretreatment: Temafloor 200 Primer or Temafloor 220 W Primer

Coating: Temafloor P 300 Metallic epoxy coating

Patterning: Epoxy thinner 006 1029









MARBLING

pattern that resembles oil-color marbling creates depth and structure on a floor surface. The marbling pattern can be achieved by spreading coatings of different colors in separate splashes on the floor, and then spreading them with an adjustable spatula so that the colors are partially mixed.

By combining the colors freely, you can create a surface with strong patterns. A more subtle look can be achieved by combining different shades in a more toned down way. The pictured ocean-themed floor with strong colors could be suitable for the lounge area of a spa, but with a different color combination, it could also be used for a night club.

Suitable products:

Pretreatment: Temafloor 200 Primer or Temafloor 220 W Primer

Coating and patterning: Temafloor P 300 epoxy coating





STAINED CONCRETE FLOOR

Staining brings a nice roughness to an entire space. It can be used to highlight scratches, cracks, and porosity in a floor in a unique way. Stained concrete floors are well suited to exhibition spaces or loft-style rooms.

WATER-BORNE METHOD

This method gives a beautifully translucent matte surface on concrete floors. The product can be tinted to the translucent grey shades of the Pro Grey color card. It can also be used without tinting, to let the concrete maintain its natural appearance. The product is M1 approved.

Suitable product:
Fontedur FL Matt

Note! The final shade depends on the color of the concrete itself and the number of treatments. This must be taken into account, especially when using light colors

SOLVENT-BORNE METHOD

This method easily gives an intentionally unevenly colored surface. By varying the shade and composition of the products, the desired result can be achieved.

Suitable products:
Ensi urethane oil, Betolux floor paint

Note! The system is suitable for dark colors only, those tinted from C base, because light colors tend to yellow.





USE OF COLOURS

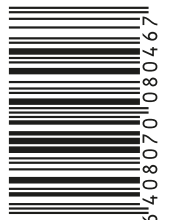
Temafloor epoxy coatings are tinted using Tikkurila's Temaspeed tinting system. For the floors pictured in this brochure, we have used shades from the RAL Classic and RAL Effect color cards. Temafloor P 300 epoxy coating is available in all the shades included in these color cards.

You can also tint the coating to create thousands of other color shades. Select the one you like from the available Tikkurila color cards. Temafloor P 300 Metallic epoxy coating has a metallic luster and can be tinted to the metallic shades shown in the RAL Effect color card.

To learn more about Temafloor floor coatings and design floor techniques, go to http://www.tikkurila.com/industrial_coatings/solutions/design_floors. If you have any questions about floor planning, implementation, or colors, please contact your nearest Tikkurila representative (www.tikkurila.fi/ammattilaiset).



Tikkurila Oyj
P.O. Box 53, FI-01301 Vantaa, Finland
Tel. +358 20 191 2000
info.coatings@tikkurila.com | www.tikkurila.com



MEDESIC000