

9th August 2024

Slip Resistance Values (SRV)

Below are the average results of Pendulum Test Values over principle axis, 90° to Principal Axis and 45° to Principal Axis

PRODUCT	WET	DRY
Centrecoat MMA Road Line	55	64
Centrecoat MMA Road Line Concrete Grade	59	69

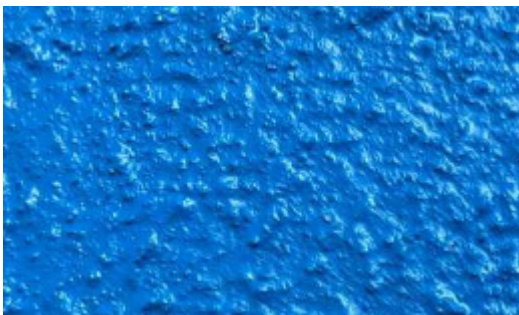
The criteria generally accepted in the U.K. are given in the 'Guidelines Recommended by the UK Slip Resistance Group'. However, it should be noted that no single piece of information can be used to assess a floor's potential for slip.

A brief summary is given below:

PENDULUM VALUE FOR SLIP

24 and below	High
25 to 35	Moderate
36 and above	Low

PRODUCT TEXTURE EXAMPLE



Technical Team
Promain UK Limited

T : +44 1462 421333
e : info@promain.co.co.uk
w : www.promain.co.uk