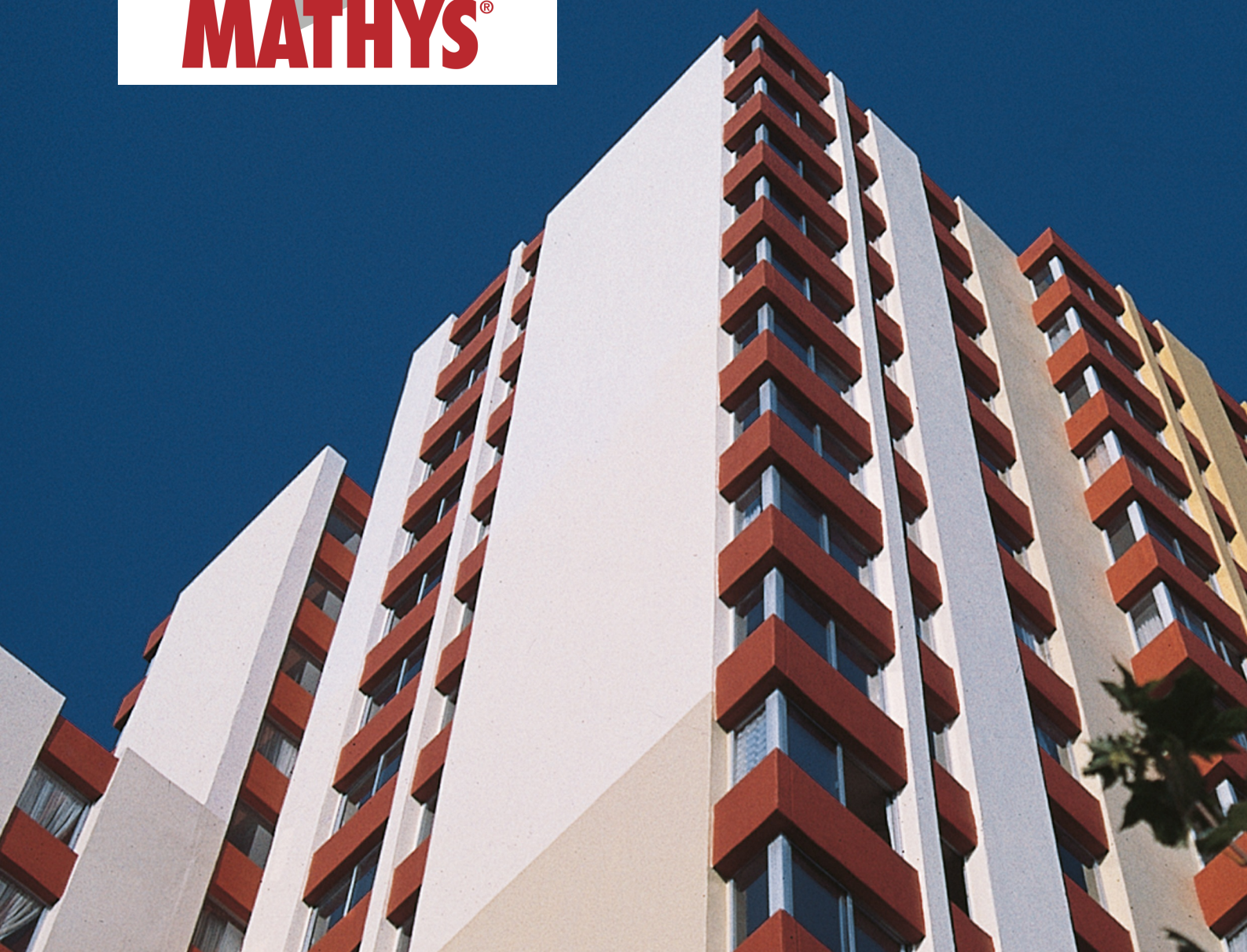


Quality Paints since 1845
MATHYS[®]



MURFILL[®] QUARTZ

Facade protection with quartz texture

- Excellent resistance against ageing in normal and industrial environment
- Waterproof and water vapour permeable
- Elastic
- Protects steel reinforced concrete against carbonization and corrosion

MURFILL® QUARTZ

DESCRIPTION

Long lasting elastic and waterproof wall protection with quartz structure.

RECOMMENDED USE

- Coating and waterproofing of walls and façades.
- Can be applied on substrates such as masonry, concrete, brick and cellular concrete.
- Repair small areas of damage or irregularities in the substrate.

TECHNICAL DATA

Density (g/cm ³):	ca. 1,6
Gloss Level:	Matt
Solids Content in weight:	± 76 %
Solids content in volume:	± 62 %

DRY TIMES BY 20° C/RH 50%

Touch dry:	± 4 hours (1 kg/m ²)
Dry to handle:	± 7 hours (1 kg/m ²)
Dry to recoat:	24 hours

RECOMMENDED WET FILM THICKNESS

± 1,6 mm (cons.: 2,5 kg/m²)

RECOMMENDED DRY FILM THICKNESS

± 1 mm (cons.: 2,5 kg/m²)

THEORETICAL CONSUMPTION

1 - 2,5 kg/m²

PRACTICAL CONSUMPTION

Practical coverage depends on many factors such as porosity and roughness of the substrate and material losses during application.

SURFACE PREPARATION

- Murfill Quartz can be applied directly on old (sound) paintwork after thorough brushing down.
- Chalking paints or substrates must be treated first - after high-pressure water cleaning - with Pegafix.
- New or non-painted substrates: on porous materials apply first a coat of Primer 44HS or Pegafix.
- On smooth non-porous substrates apply a thin coat of Noxyde diluted with 25% water or a coat of Pegalink.
- For stain, graffiti blocking and/or very fast recoating on all substrates, use Zinsser primers Bulls Eye 123 or 123 Plus, or Cover-Stain.
- Cracks < 0,5 mm wide: fill up with Murfill.
- Cracks > 0,5 mm wide: fill up with Elastofill or Mur-Filler.
- Active cracks must be bridged with Murfill fleece.

DIRECTIONS FOR USE

To ensure homogeneity, coating materials should be thoroughly stirred prior to use.

APPLICATION CONDITIONS

Minimum 5°C / Maximum 80 % R.H.

APPLICATION & THINNING: BRUSH

Apply with square brush. Do not dilute.

APPLICATION & THINNING: ROLLER

Perforated foam roller. Roller with long hairs. Do not dilute.

APPLICATION & THINNING: AIR-ATOMISED SPRAY

Low pressure spraying equipment (nozzle about 3 - 4 mm) with worm pump. Do not dilute.

CLEANING OF EQUIPMENT / SPILLS

Water.

REMARKS

Can be recoated with waterborne paints (e.g. Murfill Quartz, Murfill, Paracem, etc.).

SAFETY DATA

VOC level:	10 g/l max.
VOC category:	A/i
VOC limit:	140 g/l (2007) / 140 g/l (2010)
Remarks regarding safety:	Consult Safety Data Sheet and Safety Information printed on the can.

SHELF LIFE

Minimum of 2 years from date of production in unopened cans, if stored in dry, well ventilated areas, not in direct sunlight at temperatures between 5° and 35°C.

Date issued: 26/10/2023

Available colours & pack sizes: Please refer to the respective product page on www.rust-oleum.eu for an overview of actual available colours and pack sizes.

Disclaimer: The information contained herein is to the best of our knowledge true and accurate and is given in good faith but without warranty. The user will be deemed to have satisfied him/herself independently as to the suitability of our products for his/her own particular purpose. In no event shall Rust-Oleum Europe be liable for consequential or incidental damages. Products must be stored, handled, and applied under conditions complying with Rust-Oleum Europe recommendations detailed within the latest copy of the product data sheet. It is the users responsibility to ensure that they have the current copy. Latest copies of the product data sheet is available for free and downloadable from www.rust-oleum.eu or upon a request to our Customer Services department. Rust-Oleum Europe reserves the right to change the properties of its' products without prior notification.

Rust-Oleum Netherlands B.V.
Zilverenberg 16
5234 GM 's-Hertogenbosch
The Netherlands
T : +31 (0) 165 593 636
F : +31 (0) 165 593 600
info@rust-oleum.eu

Tor Coatings Ltd (Rust-Oleum Industrial)
Shadon Way, Portobello Ind. Estate
Birtley, Chester-le-Street
DH3 2RE United Kingdom
T : +44 (0)1914 113 146
F : +44 (0)1914 113 147
info@rust-oleum.eu

Rust-Oleum France S.A.S.
38, av. du Gros Chêne
95322 Herblay
France
T : +33(0) 130 40 00 44
F : +33(0) 130 40 99 80
info@rust-oleum.eu

N.V. Martin Mathys S.A.
Kolenbergstraat 23
3545 Zelem
Belgium
T : +32 (0) 13 460 200
F : +32 (0) 13 460 201
info@rust-oleum.eu