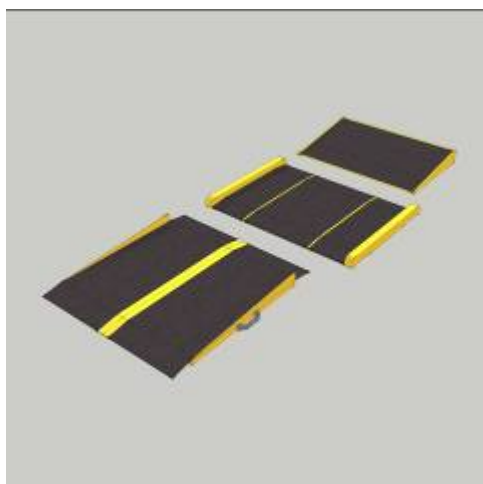


PRODUCT DATA SHEET

Access Ramps

Fibreglass Threshold Ramp
Fibreglass Standard Ramp
Aluminium Briefcase Ramp



Description

Access ramps are important to provide provision for those with mobility disability. Our ramps are engineered to exceed current DDA legislation. All ramps are manufactured to ISO 9001 standards so you can be sure that every ramp is of the highest quality.

The fibreglass and aluminium ramps are essential for overcoming physical barriers at your premises for disabled persons. Access ramps are the most economical solution for dealing with these barriers.

Access Ramp Characteristics

- Slip resistant top surface
- Meets DDA Regulations
- Portable and foldable
- High Quality Fibreglass & Aluminium
- Anti slip track surface
- High load capacity
- Lightweight

Access Ramps Applications

- Private Building Access
- Commercial Building Access
- Fire escapes
- Interior Ssteps
- Exterior steps

Rust-Oleum Netherlands B.V.

Braak 1, 4704 RJ
P.O. Box 138, 4700 AC
Roosendaal, The Netherlands
T +31 (0)165 593 636
F +31 (0)165 593 600
info@rust-oleum.eu
www.rust-oleum.eu

N.V. Martin Mathys S.A.

Kolenbergstraat 23
3545 Zelem
Halen, Belgium
T +32 (0)13 460 200
F +32 (0)13 460 201
info.be@ro-m.com
www.ro-m.com

Rust-Oleum France S.A.S

11, Rue Jules Verne, B.P. 60039
95322 St-Leu-la-Forêt Cedex
France
T +33 (0)1 30 40 00 44
F +33 (0)1 30 40 99 80
info.fr@ro-m.com
www.ro-m.com

Rust-Oleum UK Ltd.

Rotterdam House
116 Quayside
Newcastle
NE1 3DY
United Kingdom
T +44 (0)2476 717 329
F +44 (0)2476 718 930
info@rust-oleum.eu
www.rust-oleum.eu

PRODUCT DATA SHEET

Access Ramps

Access Ramps Typical Technical Data

Description: Fibreglass Threshold, Standard and Aluminium Briefcase Ramp
Top Finish: Grit top antislip surface

Ramp Stock Colours

Threshold: Black grit top surface with yellow fibreglass framework
Standard: Black grit top surface with yellow fibreglass framework
Aluminium Briefcase: Black grit top surface with yellow aluminium framework

Ramp Materials

Threshold ramp:
Fibreglass (GRP) framework with carbon and silicone grit top surface

Standard ramp:
Fibreglass (GRP) framework with carbon and silicone grit top surface

Aluminium ramp:
Aluminium framework, powder coated yellow with anti slip adhesive aggregate top surface

Ramp Specifications

Fibre Glass Threshold Ramp

Size	Height (in mm)	Length (in mm)	Internal Width (in mm)	Overall Width (in mm)	Weight (in kg)
Small	75	450	760	760	3.5
Medium	100	450	760	760	4
Large	125	450	760	760	4.25

Fibre Glass Standard Ramp

Size	Height (in mm)	Length (in mm)	Internal Width (in mm)	Overall Width (in mm)	Weight (in kg)
Small	-	600	800	875	5
Medium	-	900	800	875	8
Large	-	1200	800	875	10

Aluminium Briefcase Ramp

Size	Height (in mm)	Length (in mm)	Internal Width (in mm)	Overall Width (in mm)	Weight (in kg)
Small	-	600	750	760	6
Medium	-	900	750	760	7
Large	-	1200	750	760	9
X Large	-	1500	750	760	12

Load capabilities: 250kg, Aluminium briefcase ramp 300kg
Design life: 10+ years (subject to traffic analysis)
General use: Standard pedestrian, wheelchair/mobility scooter traffic

Rust-Oleum Netherlands B.V.
Braak 1, 4704 RJ
P.O. Box 138, 4700 AC
Roosendaal, The Netherlands
T +31 (0)165 593 636
F +31 (0)165 593 600
info@rust-oleum.eu
www.rust-oleum.eu

N.V. Martin Mathys S.A.
Kolenbergstraat 23
3545 Zelem
Halen, Belgium
T +32 (0)13 460 200
F +32 (0)13 460 201
info.be@ro-m.com
www.ro-m.com

Rust-Oleum France S.A.S
11, Rue Jules Verne, B.P. 60039
95322 St-Leu-la-Forêt Cedex
France
T +33 (0)1 30 40 00 44
F +33 (0)1 30 40 99 80
info.fr@ro-m.com
www.ro-m.com

Rust-Oleum UK Ltd.
Rotterdam House
116 Quayside
Newcastle
NE1 3DY
United Kingdom
T +44 (0)2476 717 329
F +44 (0)2476 718 930
info@rust-oleum.eu
www.rust-oleum.eu

PRODUCT DATA SHEET

Access Ramps

Benefits

Meets DDA Regulations

The Disability Discrimination Act states that service providers have to make "reasonable adjustments" in relation to the physical features of their premises to overcome physical barriers to access. Any of the Rust-Oleum's Ramps should be able to help with this requirement.

Slip Resistant Surface

All ramps incorporate our standard grit top surface providing an excellent slip resistant surface even in extreme weather conditions. An important factor given ramps are generally used externally.

High Quality Materials

If you are choosing either the fibreglass or aluminium ramps you can be assured that both sets of ramps are made to an extremely high specification ensuring the products long life even in external applications.

High Load Capacity

With the increasing number of motorised access vehicles on the market, sometimes weighing up to 100kg, the high quality construction means that the ramps are able to cope with loads of up to 300kg.

Access Ramps Cleaning Guide and Tips

- Whilst Access Ramps are extremely resilient to dirt and contaminants, it can, as with most other things, become dirty.
- Dirt and debris can easily be removed using a stiff brush and should be carried out on a regular basis.
- If Access Ramps have been subjected to spillages or the dirt has become embedded, detergents can be used. It is always advisable to test any cleaning product on all Access Ramps before starting the cleaning procedure. This can be done in an inconspicuous area of the product.
- Using the detergent, warm water and a suitable brush, scrub the areas until clean. The excess water can be removed using a wet/dry vacuum cleaner or suitable absorbable materials.
- Where circumstances allow, Access Ramps can be power washed without causing harm.

General Routine Maintenance

The security of the access ramps should be checked on a regular basis. Circumstances will vary, based upon the volume of usage, but, as a guide, monthly inspections would be advisable.

Rust-Oleum Netherlands B.V.
Braak 1, 4704 RJ
P.O. Box 138, 4700 AC
Roosendaal, The Netherlands
T +31 (0)165 593 636
F +31 (0)165 593 600
info@rust-oleum.eu
www.rust-oleum.eu

N.V. Martin Mathys S.A.
Kolenbergstraat 23
3545 Zelem
Halen, Belgium
T +32 (0)13 460 200
F +32 (0)13 460 201
info.be@ro-m.com
www.ro-m.com

Rust-Oleum France S.A.S
11, Rue Jules Verne, B.P. 60039
95322 St-Leu-la-Forêt Cedex
France
T +33 (0)1 30 40 00 44
F +33 (0)1 30 40 99 80
info.fr@ro-m.com
www.ro-m.com

Rust-Oleum UK Ltd.
Rotterdam House
116 Quayside
Newcastle
NE1 3DY
United Kingdom
T +44 (0)2476 717 329
F +44 (0)2476 718 930
info@rust-oleum.eu
www.rust-oleum.eu

PRODUCT DATA SHEET

Access Ramps



Rust-Oleum Netherlands B.V.
Braak 1, 4704 RJ
P.O. Box 138, 4700 AC
Roosendaal, The Netherlands
T +31 (0)165 593 636
F +31 (0)165 593 600
info@rust-oleum.eu
www.rust-oleum.eu

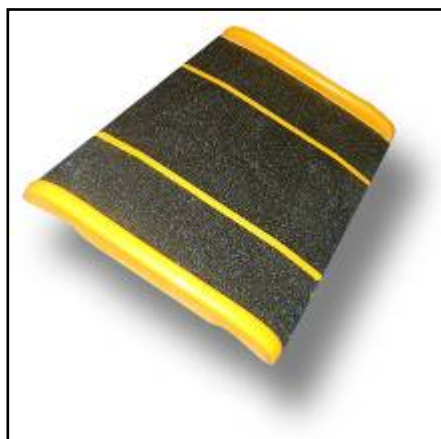
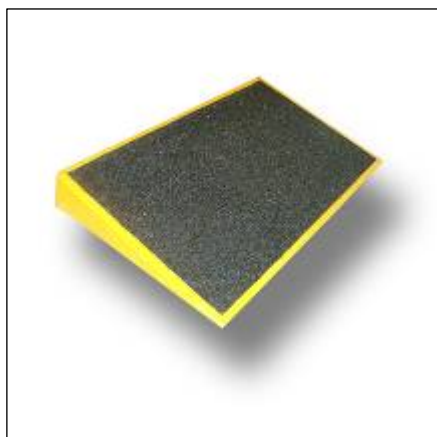
N.V. Martin Mathys S.A.
Kolenbergstraat 23
3545 Zelem
Halen, Belgium
T +32 (0)13 460 200
F +32 (0)13 460 201
info.be@ro-m.com
www.ro-m.com

Rust-Oleum France S.A.S
11, Rue Jules Verne, B.P. 60039
95322 St-Leu-la-Forêt Cedex
France
T +33 (0)1 30 40 00 44
F +33 (0)1 30 40 99 80
info.fr@ro-m.com
www.ro-m.com

Rust-Oleum UK Ltd.
Rotterdam House
116 Quayside
Newcastle
NE1 3DY
United Kingdom
T +44 (0)2476 717 329
F +44 (0)2476 718 930
info@rust-oleum.eu
www.rust-oleum.eu

PRODUCT DATA SHEET

Access Ramps



Rust-Oleum Netherlands B.V.

Braak 1, 4704 RJ
P.O. Box 138, 4700 AC
Roosendaal, The Netherlands
T +31 (0)165 593 636
F +31 (0)165 593 600
info@rust-oleum.eu
www.rust-oleum.eu

N.V. Martin Mathys S.A.

Kolenbergstraat 23
3545 Zelem
Halen, Belgium
T +32 (0)13 460 200
F +32 (0)13 460 201
info.be@ro-m.com
www.ro-m.com

Rust-Oleum France S.A.S

11, Rue Jules Verne, B.P. 60039
95322 St-Leu-la-Forêt Cedex
France
T +33 (0)1 30 40 00 44
F +33 (0)1 30 40 99 80
info.fr@ro-m.com
www.ro-m.com

Rust-Oleum UK Ltd.

Rotterdam House
116 Quayside
Newcastle
NE1 3DY
United Kingdom
T +44 (0)2476 717 329
F +44 (0)2476 718 930
info@rust-oleum.eu
www.rust-oleum.eu